

DEPARTMENT OF THE ARMY TECHNICAL MANUAL

**OPERATOR'S, ORGANIZATIONAL, DIRECT SUPPORT, AND GENERAL
SUPPORT MAINTENANCE REPAIR PARTS AND SPECIAL
TOOLS LISTS (INCLUDING DEPOT MAINTENANCE
REPAIR PARTS AND SPECIAL TOOLS)
TEST SET, TELEGRAPH AN/PGM-1A
(FSN 6625-643-4323)**

Headquarters, Department of the Army, Washington, DC
16 December 1974

Current as of 1 October 1974

	Pararaph	P a g e
SECTION I. INTRODUCTION		
Scope	1-1	2
General	1-2	2
Explanation of columns	1-3	2
Special information	1-4	4
Location of repair parts	1-5	4
Abbreviations (Not applicable)	1-6	5
Reporting of equipment manual improvements	1-7	5
II. BASIC ISSUE ITEMS LIST (Not applicable)		
III. ITEMS TROOP INSTALLED OR AUTHORIZED LIST (Not applicable)		
IV. PRESCRIBED LOAD ALLOWANCE (Not applicable)		
V. REPAIR PARTS LIST		6
VI. SPECIAL TOOLS, TEST AN9 SUPPORT EQUIPMENT (Not applicable)		
VII. REPAIR PARTS LIST		7
VIII. SPECIAL TOOLS, TEST AND SUPPORT EQUIPMENT (Not applicable)		
IX. INDEX - FEDERAL STOCK NUMBER AND REFERENCE NUMBER CROSSREFERENCE TO FIGURE AND ITEM NUMBER		11

*This manual supersedes TM 11-6625-370-12P, 14 April 1964 and TM 11-6625-370-35P, 21 November 1960.

SECTION I

INTRODUCTION

1-1. Scope

This manual lists basic issue items, items troop installed or authorized, repair parts, and special tools required by the crew/operator for operation and required for the performance of organizational, direct support, general support, and depot maintenance of the AN/PGM-1A. The PCCN for the AN/PGM-1A is GCWAPD for all models.

1-2. General

This basic issue items, items troop installed or authorized, repair parts, and special tools list is divided into the following sections -

a. Basic Issue Item List - Section II. Not applicable.

b. *Items Troop Installed or Authorized List - Section III.* Not applicable.

c. *Prescribed Load Allowance (PLA) - Section IV.* Not applicable.

d. *Repair Parts List - Section V.* A list of repair parts authorized for the performance of maintenance at the organizational level. This repair parts list is arranged in alphabetical order.

e. *Special Tools, Test and Support Equipment - Section VI.* Not applicable.

f. *Repair Parts List - Section VII.* A list of repair parts authorized for the performance of maintenance at the direct support, general support, and depot level.

g. *Special Tools, Test and Support Equipment - Section VIII.* Not applicable.

h. *Index - Federal Stock Number and Reference Number Cross-Reference to Figure and Item Number - Section IX.* A list, in ascending numerical sequence, of all Federal stock numbers appearing in the listings, followed by a list, in alphanumeric sequence, of all reference numbers appearing in the listings. Federal stock number and reference numbers are cross-referenced to each illustration figure and item number or reference designation appearance.

1-3. Explanation of Columns

The following provides an explanation of columns found in the tabular list.

a. *Source, Maintenance and Recoverability Codes (SMR).*

(1) *Source code.* Indicates the manner of acquiring support items for maintenance, repair, or overhaul of end items. Source codes are:

Code	Explanation
PA	Item procured and stocked for anticipated or known usage.

Code	Explanation
P B	Item procured and stocked for insurance purposes because essentiality dictates that a minimum quantity be available in the supply systems.
P C	Item procured and stocked and which otherwise would be coded PA except that it is deteriorative in nature.
P D	support item, excluding support equipment, procured for initial issue or outfitting and stocked only for subsequent or additional initial issues or Outfittings. Not subject to automatic replenishment.
P E	Support equipment procured and stocked for initial issue or outfitting to specified maintenance repair activities.
P F	Support equipment which will not be stocked but which will be centrally procured on demand.
P G	Item procured and stocked to provide for sustained support for the life of the equipment. It is applied to an item peculiar to the equipment which because of probable discontinuance or shutdown of production facilities would prove uneconomical to reproduce at a later time.
KD	An item of depot overhaul/repair kit and not purchased separately. Depot kit defined as a kit that provides items required at the time of overhaul or repair.
KF	An item of a maintenance kit and not purchased separately. Maintenance kit defined as a kit that provides an item that can be replaced at organizational or direct support or general support levels of maintenance.
KB	Item included in both a depot overhaul/repair kit and a maintenance kit.
MO	Item to be manufactured or fabricated at organizational level.
MF	Item to be manufactured or fabricated at direct support maintenance level.
MH	Item to be manufactured or fabricated at general support maintenance level.
MD	Item to be manufactured or fabricated at depot maintenance level.
AO	Item to be assembled at organizational level.
AF	Item to be assembled at direct support maintenance level.
AH	Item to be assembled at general support maintenance level.

<i>Code</i>	<i>Explanation</i>
AD —	Item to be assembled at depot maintenance level.
XA —	Item is not procured or stocked because the requirements for the item will result in the replacement of the next higher assembly.
XB —	Item is not procured or stocked. If not available through salvage, requisition.
XC -	Installation drawing, diagram instruction sheet, field service drawing, that is identified by manufacturers' part number.
XD -	Support items can be requisitioned with justification.

NOTE

Cannibalization or salvage may be used as a source of supply for any items source coded above except those coded XA and aircraft support items as restricted by AR 700-42.

(2) **Maintenance** code. Maintenance codes are assigned to indicate the levels of maintenance authorized to USE and REPAIR support items. The maintenance codes are entered in the third and fourth positions of the Uniform SMR Code Format as follows:

(a) Use (third position). The maintenance code entered in the third position indicates the lowest maintenance level authorized to remove, replace, and use the support item. The maintenance code entered in the third position indicates one of the following levels of maintenance.

<i>Code</i>	<i>Application/Explanation</i>
o -	Support item is removed, replaced, used at the organizational level of maintenance.
NOTE	
	A code "C" may be used in this position to denote crew or operator maintenance performed within organizational maintenance.
F -	Support item is removed, replaced, used at the direct support maintenance level.
H -	Support item is removed, replaced, used at the general support maintenance.
D -	Support items that are removed, replaced, used at depot only.

(b) **Repair (fourth position)**. The maintenance code entered in the fourth position indicates whether the item is to be repaired and identifier; the lowest maintenance level with the capability to perform complete repair (i.e., all authorized maintenance functions). When a maintenance code is not used a dash (-) sign is entered. For multiservice equipment/systems or when a code is entered, this position will contain one of the following maintenance

codes as assigned by the service(s) that require the code:

<i>Code</i>	<i>Application/Explanation</i>
o -	The lowest maintenance level capable of complete repair of the support item is the organizational level.
F -	The lowest maintenance level capable of complete repair of the support item is direct support.
H -	The lowest maintenance level capable of complete repair of the support item is general support.
D -	The lowest maintenance level capable of complete repair of the support item is the depot level.
L -	Repair restricted to designated Specialized Repair Activity.
Z -	Non-repairable. No repair is authorized.
B -	No repair is authorized. The item may be reconditioned by adjusting, lubricating, etc., at the user level. No parts or special tools are procured for the maintenance of this item.

(3) **Recoverability** code. Recoverability codes are assigned to support items to indicate the disposition action on unserviceable items. The recoverability code is entered in the fifth position of the uniform SMR Code Format as follows:

<i>Code</i>	<i>Explanation</i>
z -	Nonrepairable item. When unserviceable, condemn and dispose at the level indicated in the first digit of the maintenance code.
O -	Repairable item. When uneconomically repairable, condemn and dispose at organizational level.
F -	Repairable item. When uneconomically repairable, condemn and dispose at the direct support level.
H -	Repairable item. When uneconomically repairable, condemn and dispose at the general support level.
D -	Repairable item. When beyond lower level repair capability, return to depot. Condemnation and disposal not authorized below depot level.
L -	Repairable item. Repair, condemnation, and disposal not authorized below depot/Specialized Repair Activity level.
A -	Item requires special handling or condemnation procedures because of specific reasons (i.e., precious metal content, high dollar value, critical material or hazardous material).

b. Federal **Stock Number**. Indicates the Federal

stock number assigned to the item and will be used for requisitioning purposes.

NOTE

For requisitioning purposes, the Federal stock number must be converted to the National stock number by adding "-00-" after the Federal stock classification (FSC) code (first four digits). For example, FSN 6625-553-0142 converts to NSN 6625-00-553-0142.

c. Description. Indicates the Federal item name and a minimum description required to identify the item. The last line indicates the reference number followed by the applicable Federal Supply Code for Manufacturer (FSCM) in parentheses. The FSCM is used as an element in item identification to designate manufacturer or distributor or Government agency, etc., and is identified in SB 708-42.

d. Unit of Measure (U/M). Indicates the standard or basic quantity by which the listed item is used in performing the actual maintenance function. This measure is expressed by a two-character alphabetical abbreviation, e.g., ea, in, pr, etc., and is the basis used to indicate quantities and allowances in subsequent columns. When the unit of measure differs from the unit of issue, the lowest unit of issue that will satisfy the required units of measure will be requisitioned.

e. Quantity Furnished with Equipment (Basic Issue Items Only). Not applicable.

f. Quantity Authorized (Items Troop Installed or Authorized Only). Not applicable.

g. Quantity Incorporated in Unit. This column indicates the quantity of the item used in the equipment. Subsequent appearances of the same item in the same assembly are indicated by the letters "REF".

h. 15-Day Organizational Maintenance Allowances.

(1) The repair parts indicated by an asterisk in the allowance column represent those authorized for use at the organizational category, and will be requisitioned on an "as required" basis, until stockage is based on demand in accordance with AR 710-2.

(2) Major Army commanders are authorized to approve reduction *in* the range of support items authorized for use in units within their commands. Recommendations for increase in range of items authorized for use will be forwarded to the Commander, US Army Electronics Command, ATTN: AMSEL-MA-CW, Fort Monmouth, N.J., 07703.

(3) Allowance quantities are indicated in the special tools list section for special tools, TMDE, and other support equipment.

i. 30-Day DS/GS Maintenance Allowances.

NOTE

Allowances in GS column *are* for GS maintenance only.

(1) The repair parts indicated by asterisk entries in separate allowance columns for DS and GS represent those authorized for use at that category Of maintenance to be requisitioned on an "as required" basis, until stockage is based on demand in accordance with AR 710-2.

(2) Allowance quantities are indicated in the special tool lists section for special tools, TMDE, and other support equipment.

j. 1-Year Allowances Per 100 Equipments/Contingency Planning Purposes. Column intentionally left blank.

k. Depot Maintenance Allowance Per 100 Equipments. This column indicates opposite the first appearance of each item the total quantity authorized for depot maintenance of 100 equipments.

l. Illustration.

(1) *Figure* number. Not applicable.

(2) Item number. Indicates the item number or reference designation used to reference the item.

1-4. Special Introduction

Usable on codes are included in column 3. Uncoded items are applicable to all models. Identification of the usable on codes used in this publication are:

Code	Used on
B1A	AN/PGM-1A

1-5. Location of Repair Parts

cc. This manual contains one cross reference index (sec IX) to be used to locate a repair part when either the Federal stock number or reference number (manufacturer's part number) is known. The first column in the index is prepared in numerical or alphanumeric sequence in ascending order. The reference numbers (manufacturer's part numbers) are listed immediately following the last listed Federal stock number in the index of Federal stock numbers.

b. When the Federal stock number or reference number is known, follow the procedures given in (1) and (2) below.

(1) Refer to the index of Federal stock numbers (se IX), and locate the Federal stock number or reference number. The FSN and reference number are cross-referenced to the applicable figure and item number or reference designation.

(2) Refer to the repair parts list (sec V and VII) and locate the figure number (col 7a - 20P, 10a - 34P) and item number or reference designation (col 7b - 20P, 10b - 34P) as noted in the FSN index.

c. When the figure and item number or reference

designation are known, scrutinize columns 7a and 7b — 20P and 10a and 10b — 35P, of the repair parts list (sec V and VII) until the item is located.

d. When the FSN, reference number, figure number, and item number are not known, scrutinize column 3 of the repair parts list (sec V and VII), which is arranged in alphabetical order.

1-6. Abbreviations

Not applicable.

1-7. Reporting of Equipment Manual Improvements

The reporting of errors, omissions, and recommendations for improving this publication by the individual user is encouraged. Reports should be submitted on DA Form 2028 (Recommended Changes to Publications and Blank Forms) and forwarded direct to Commander, US Army Electronics Command, ATTN: AMSEL-MA-CW, Fort Monmouth, NJ 07703.

SECTION V

TM1-6625-370-14P

MFR CODE	FEDERAL STOCK NUMBER	DESCRIPTION	UNIT OF MEAS	QTY INC IN UNIT	15-DAY ORGANIZATIONAL MAINTENANCE ALW				ILLUSTRATION	
					(a)	(b)	(c)	(d)	(a)	(b)
					1-5	6-20	21-50	51-100	FIGURE NO	ITEM NO
PCJLL	5340-286-0746	BUMPER, RUBBER A101 NATURAL RUB. 1/2 IN OD X.. 1/4 IN H O/A 1/8 IN LG SHANK 1308 (70485)	EA	4	*	*	*	*		A101
CAZZ		CAP. ELECTRICAL NO-REF-DESIG F/FUSEHOLDER LOCK 34200: A2 (75915)	EA	1	*	*	*	*		
CAZZ		CLIP, ELECTRICAL 0102 BATTERY STYLE 3/8 IN MAX OPEN F (81341)	EA	1	*	*	*	*		0102
PACZZ	9920-280-4903	FUSE, CARTRIDGE F101 2 AMP, 250 VDC..... F02A250V2 (81349)	EA	1	*	*	*	*		F101
CAZZ		KNIB E101 BAR W/SGLE POINTER SHAPE, PHENOLIC.. FOR PLAIN 1/4 IN DIA SHAFT 118612 (59433)	EA	1	*	*	*	*		E101

SECTION VII

TM 11-6625-370-14P

(1) S/R CODE	(2) FEDERAL STOCK NUMBER	(3) DESCRIPTION REFERENCE NUMBER & MFR. CODE USABLE ON CODE	(4) UNIT OF MEAS	(5) QTY INC IN UNIT	(6) 30-DAY DS MAINT ALLOWANCE			(7) 30-DAY GS MAINT ALLOWANCE			(8) 1-YR ALW PER 100 EQUIP CHYCY	(9) DEPOT MAINT ALW PER 100 EQUIP	(10) ILLUSTRATION	
					(a)	(b)	(c)	(a)	(b)	(c)			(a)	(b)
					1-20	21-50	51-100	1-20	21-50	51-100			FIGURE NO	ITEM NO
XDZZ		ADAPTER, CABLE TO CONNECTOR NO-REF-DESIG- 7/16 IN CABLE OPENING INSIDE THO 3/4 IN - 20	EA	1				*	*	*				
PCOZZ	5340-266-0746	AN3057-6 (88044) BUMPER, RUBBER A101 NATURAL RUB. 1/2 IN. 09 X 1/4 IN H O/A 1/8 IN LG SHANK	EA	4	*	*	*	*	*	*	10		A101	
PAHZZ	6145-284-0579	CABLE (70485) CABLE, POWER, ELECTRICAL W104 3 COND NO. 1.8 IN LG	FT	6				*	*	*	5		W104	
XDZZ		SJO (88193) CAP, ELECTRICAL NO-REF-DESIG.....	EA	1	*	*	*	*	*	*				
XDZZ		F/FUSEHOLDER TH LOCK 3420035A2 (75915)	EA	1				*	*	*			O101	
PAHZZ	5910-668-0254	173-0-101 (06053) CAPACITOR, FIXED, ELECTROLYTIC C106 125. UF, 400 VDCW	EA	2				*	*	*	3		C106	
PAHZZ	5910-668-0254	D13860-917 (56289) CAPACITOR, FIXED, ELECTROLYTIC C107 125. UF, 400 VDCW	EA	REF				*	*	*	3		C107	
XDZZ		D13860-917 (56289) CAPACITOR, FIXED, MICA DIELECTRIC C102... 240 UUF PORM10PCT	EA	1				*	*	*			C102	
PAHZZ	5910-112-7409	CM208241J (81349) CAPACITOR, FIXED, PAPER DIELECTRIC C103... 0.5 UUF PORM10PCT	EA	2				*	*	*	3		C103	
PAHZZ	5910-112-7409	CP53B1FF504K (81349) CAPACITOR, FIXED, PAPER DIELECTRIC C104... 0.5 UUF PORM10PCT	EA	REF				*	*	*	3		C104	
PAHZZ	5910-811-6091	CP53B1FF504K (81349) CAPACITOR, FIXED, PAPER DIELECTRIC C101... 2 UUF P10M50PCT 600 VDCW HERM SEALED, STJD TERM	EA	1				*	*	*	3		C101	
PAHZZ	5910-112-78399	TJU6020 (14655) CAPACITOR, FIXED, PAPER DIELECTRIC C105... 2 UUF PORM10PCT	EA	1				*	*	*	3		C105	
XDZZ		CP53B1FF205K (81349) CLIP, ELECTRICAL O102 BATTERY STYLE 3/8. IN MAX OPEN	EA	1	*	*	*	*	*	*			O102	
PAHZZ	5935-636-7145	PC (81349) CONNECTOR, PLUG, ELECTRICAL P102 3 PIN... UP121M (81349)	EA	1				*	*	*	3		P102	
XDZZ		CONNECTOR, PLUG, ELECTRICAL J101 FEMALE. CONTACTS	EA	1				*	*	*			J101	
XDZZ		AN3106B14S (88044) CONNECTOR, RECEPTACLE, ELECTRICAL P101... PANEL MTD, 7 PIN	EA	1				*	*	*			P101	
PAHZZ	5960-642-8341	AN3102A14S7P (88044) ELECTRON TUBE V101.....	EA	1				*	*	*	100		V101	
PAHZZ	5960-188-0883	SU4GB (81349) ELECTRON TUBE V104..... 6SL7WGT (81349)	EA	1				*	*	*	100		V104	

SECTION VII

TM11-6625-370-14P

(1) SMB CODE	(2) FEDERAL STOCK NUMBER	(3) DESCRIPTION REFERENCE NUMBER & MFR. CODE USABLE ON CODE		(4) UNIT OF MEAS	(5) QTY INC IN UNIT	(6) 30-DAY DS MAINT ALLOWANCE			(7) 30-DAY GS MAINT ALLOWANCE			(8) 1-YR ALW PER 100 EQUIP CHNGCY	(9) DEPOT MAINT ALW PER 100 EQUIP	(10) ILLUSTRATION	
						(a)	(b)	(c)	(a)	(b)	(c)			(a)	(b)
						1-20	21-50	51-100	1-20	21-50	51-100			FIGURE NO.	ITEM NO.
XDHZZ		ELECTRON TUBE V102.....		EA	2				*	*	*				V102
XDHZZ		6Y6G (81349)		EA	REF				*	*	*				V102
PACZZ	5920-280-4980	ELECTRON TUBE V103.....		EA	REF				*	*	*				V102
XDHZZ		6Y6G (81349)		EA	REF				*	*	*				V102
PACZZ	5920-280-4980	FUSE, CARTRIDGE F101 2 AMP, 250 VDC....		EA	1	*	*	*	*	*	*	5			F101
XDHZZ		F02A250VZA (81349)		EA	1				*	*	*				F101
XDHZZ		FUSEHOLDER XF101 EXTRACTOR POST TYPE....		EA	1				*	*	*				F101
XDHZZ		342001 (75915)		EA	1				*	*	*				F101
XDHZZ		KNJB E101 BAR W/SGLE POINTER SHAPE.....		EA	1	*	*	*	*	*	*				E101
XDHZZ		PHENOLIC, FOR PLAIN 1/4 IN DIA SHAFT		EA	1				*	*	*				E101
PCHZZ	5975-226-6676	112612 (59433)		EA	1				*	*	*	5			E101
XDHZZ		NIPPLE, CABLE, ELECTRICAL NO-REF-DESIG...		EA	1				*	*	*				E101
XDHZZ		RUBBER FOR INSULATION OF ALLIGATOR CLIP		EA	1				*	*	*				E101
XDHZZ		47 (76545)		EA	2				*	*	*				E104
XDHZZ		POST, BINDING E104 BLACK CAP SCREW TYPE		EA	REF				*	*	*				E104
XDHZZ		1-1/32 IN LG EXCL MTG STUD		EA	REF				*	*	*				E104
XDHZZ		DF308C (58474)		EA	REF				*	*	*				E104
XDHZZ		POST, BINDING E107 BLACK CAP SCREW TYPE		EA	REF				*	*	*				E107
XDHZZ		1-1/32 IN LG EXCL MTG STUD		EA	REF				*	*	*				E107
XDHZZ		DF308C (58474)		EA	REF				*	*	*				E107
XDHZZ		POST, BINDING E105 RED CAP SCREW TYPE..		EA	2				*	*	*				E105
XDHZZ		1-1/32 LG EXCL MTG STUD		EA	2				*	*	*				E105
XDHZZ		DF308C (58474)		EA	2				*	*	*				E105
XDHZZ		POST, BINDING E106 RED CAP SCREW TYPE..		EA	REF				*	*	*				E106
XDHZZ		1-1/32 LG EXCL MTG STUD		EA	REF				*	*	*				E106
XDHZZ		DF308C (58474)		EA	REF				*	*	*				E106
PAHZZ	5307-638-2056	POST, CLAMP E110 F/TUBE RETAINER.....		EA	3				*	*	*	2			E110
PAHZZ	5307-638-2056	32 (97983)		EA	3				*	*	*				E110
PAHZZ	5307-638-2056	POST, CLAMP E111 F/TUBE RETAINER.....		EA	REF				*	*	*	2			E111
PAHZZ	5307-638-2056	32 (97983)		EA	REF				*	*	*				E111
PAHZZ	5307-638-2056	POST, CLAMP E112 F/TUBE RETAINER.....		EA	REF				*	*	*	2			E112
PAHZZ	5307-638-2056	32 (97983)		EA	REF				*	*	*				E112
PAHZZ	53047-807-0507	POST, CLAMP E113 F/TUBE RETAINER.....		EA	1				*	*	*	2			E113
PAHZZ	53047-807-0507	42 (97983)		EA	1				*	*	*				E113
XDHZZ		RESISTOR, FIXED, COMPOSITION R109 27 OHM		EA	2				*	*	*				R109
XDHZZ		PORM5PCT 2 W		EA	2				*	*	*				R109
XDHZZ		RC42GF270J (81349)		EA	REF				*	*	*				R109
XDHZZ		RESISTOR, FIXED, COMPOSITION R110 27 OHM		EA	REF				*	*	*				R110
XDHZZ		PORM5PCT 2 W		EA	REF				*	*	*				R110
XDHZZ		RC42GF270J (81349)		EA	REF				*	*	*				R110
XDHZZ		RESISTOR, FIXED, COMPOSITION R104 47 OHM		EA	2				*	*	*				R104
XDHZZ		PORM10PCT 1/2 W		EA	2				*	*	*				R104
XDHZZ		RC20GF470K (81349)		EA	2				*	*	*				R104
XDHZZ		RESISTOR, FIXED, COMPOSITION R105 47 OHM		EA	REF				*	*	*				R105
XDHZZ		PORM10PCT 1/2 W		EA	REF				*	*	*				R105
XDHZZ		RC20GF470K (81349)		EA	REF				*	*	*				R105
PAHZZ	5905-171-2005	RESISTOR, FIXED, COMPOSITION R107 470...		EA	2				*	*	*	3			R107
PAHZZ	5905-171-2005	OHM PORM10PCT 1/2 W		EA	2				*	*	*				R107
PAHZZ	5905-171-2005	RC20GF471K (81349)		EA	2				*	*	*				R107
PAHZZ	5905-171-2005	RESISTOR, FIXED, COMPOSITION R108 470...		EA	REF				*	*	*	3			R108
PAHZZ	5905-171-2005	OHM PORM10PCT 1/2 W		EA	REF				*	*	*				R108
PAHZZ	5905-171-2005	RC20GF471K (81349)		EA	REF				*	*	*				R108

SECTION VII

TM11-6625-370-14P

(1) SMR CODE	(2) FEDERAL STOCK NUMBER	(3) DESCRIPTION REFERENCE NUMBER & MFR CODE USABLE CN CODE		(4) UNIT OF MEAS	(5) QTY INC IN UNIT	(6) 30-DAY DS MAINT ALLOWANCE			(7) 30-DAY GS MAINT ALLOWANCE			(8) 1-YR ALW PER 100 EQUIP CNTGCT	(9) DEPOT MAINT ALW PER 100 EQUIP	(10) ILLUSTRATION	
						(a)	(b)	(c)	(a)	(b)	(c)			(a)	(b)
						1-20	21-50	51-100	1-20	21-50	51-100			FIGURE NO.	ITEM NO.
PAHZZ	5905-299-2021	RESISTOR, FIXED, COMPOSITION R115 6800..	EA	1				*	*	*					R115
		OHMS PORM10PCT 1 W RC32GF682K (81349)											3		R114
PAHZZ	5905-299-2020	RESISTOR, FIXED, COMPOSITION R114 20,000	EA	1				*	*	*					R117
		OHMS PGRM5PCT 1 W RC32GF203J (81349)											3		R111
PAHZZ	5905-254-7708	RESISTOR, FIXED, COMPOSITION R117 27,000	EA	1				*	*	*					R113
		OHMS PGRM5PCT 1 W RC32GF273J (81349)											3		R116
PAHZZ	5805-185-6955	RESISTOR, FIXED, COMPOSITION R111 33,000	EA	1				*	*	*					R112
		OHMS PORM10PCT 1/2 W RC20GF333K (81349)											3		R102
PAHZZ	5905-185-6946	RESISTOR, FIXED, COMPOSITION R113 51,000	EA	1				*	*	*					R103
		OHMS PGRM5PCT 2 W RC42GF513J (81349)											3		R106
PAHZZ	5905-185-6946	RESISTOR, FIXED, COMPOSITION R116 75,000	EA	1				*	*	*					R101
		OHMS PGRM5PCT 2 W RC42GF753J (81349)											3		R118
PAHZZ	5905-666-3048	RESISTOR, FIXED, COMPOSITION R112 470...	EA	1				*	*	*					H104
		OHMS PORM10PCT 1/2 W RC20GF474K (81349)											2		H101
PAHZZ	5905-617-2608	RESISTOR, FIXED, COMPOSITION R102 1 MEG.	EA	2				*	*	*					H102
		PORM10PCT 1 W RC32GF105K (81349)											3		H103
PAHZZ	5905-617-2608	RESISTOR, FIXED, COMPOSITION R103 1 MEG.	EA	REF				*	*	*					H104
		PORM10PCT 1 W RC32GF105K (81349)											3		H101
PAHZZ	5905-617-2608	RESISTOR, FIXED, COMPOSITION R106 2.2...	EA	1				*	*	*					H102
		MEG PORM10PCT 1 W RC32GF225K (81349)											3		H103
PAHZZ	5960-223-5970	RESISTOR, FIXED, WIRE WOUND R101 10,000.	EA	1				*	*	*					E102
		OHMS PGRM5PCT 25 W 10000-219-25F (14841)											2		
PAHZZ	5960-273-2434	RESISTOR, VARIABLE R118 COMP, 100,000...	EA	1				*	*	*					
		OHMS PORM10PCT 2 W JUL041P3056 (01121)											2		
PAHZZ	5960-273-2434	RETAINER, ELECTRON TUBE H104 FOR ST-14..	EA	1				*	*	*					
		AND ST-16 RETMA ENVELOPES 4MAT (97983)											2		
PAHZZ	5960-273-2434	RETAINER, ELECTRON TUBE H101 FOR T-9....	EA	3				*	*	*					
		GLASS AND METAL RETMA ENVELOPES 2 (97983)											2		
PAHZZ	5960-273-2434	RETAINER, ELECTRON TUBE H102 FOR T-9....	EA	REF				*	*	*					
		GLASS AND METAL RETMA ENVELOPES 2 (97983)											2		
PAHZZ	5960-273-2434	RETAINER, ELECTRON TUBE H103 FOR T-9....	EA	REF				*	*	*					
		GLASS AND METAL RETMA ENVELOPES 2 (97983)											2		
PAHZZ	5960-273-2434	SHIELD, ELECTRON TUBE E102 ACCOM.....	EA	1				*	*	*					
		ENVELOPE STYLE T-5 1/2 (5-3) TS102U03 (81350)											1		
X8HZZ		SOCKET, ELECTRON TUBE XV105 PLASTIC 7...	EA	1											

SECTION VII

TM11-6625-370-14P

(1) LINE CODE	(2) FEDERAL STOCK NUMBER	(3) DESCRIPTION REFERENCE NUMBER & MFR. CODE	(4) UNIT OF MEAS.	(5) QTY IN UNIT	(6) 30-DAY QS MAINT ALLOWANCE			(7) 30-DAY QS MAINT ALLOWANCE			(8) 1-YR ALN PER EQUIP CATGCT	(9) DEPRT ALN PER EQUIP	(10) ILLUSTRATION	
					(a)	(b)	(c)	(a)	(b)	(c)			(a)	(b)
					1-20	21-50	51-100	1-20	21-50	51-100			FIGURE NO.	ITEM NO.
		CONTINUED												
PAWZ	5935-063-5780	PIM MIN STYLE W/SHIF. D BASE TYPE T5E7101 147-916 (02660) SOCKET, ELECTRON TUBE XV101 F/OCTAL..... TUBES	EA	4				*	*	*		3		
PAWZ	5935-063-5789	TS101P01 (01349) SOCKET, ELECTRON TUBE XV102 F/OCTAL..... TUBES	EA	REF				*	*	*		3		
PAWZ	5935-063-5789	TS101P01 (01349) SOCKET, ELECTRON TUBE XV103 F/OCTAL..... TUBES	EA	REF				*	*	*		3		
PAWZ	5935-063-5789	TS101P01 (01349) SOCKET, ELECTRON TUBE XV104 F/OCTAL..... TUBES	EA	REF				*	*	*		3		
PAWZ	5930-655-1508	TS101P01 (01349) SWITCH, TOGGLE S103 DC INPUT TO METER... S123N (01350)	EA	1				*	*	*		5	S103	
DIWZ		SWITCH, TOGGLE S101 DPST..... MS3509-9 (94906)	EA	2				*	*	*			S101	
DIWZ		SWITCH, TOGGLE S102 DPST..... MS3509-9 (94906)	EA	REF				*	*	*			S102	
DIWZ		TRANSFORMER, POWER, STEP-DOWN AND STEP-UP T101 115V, 60 CYC, 1 PH 740, 6.6 ANC 6.3V SEC	EA	1				*	*	*			T101	
PAWZ	6625-643-0600	T1067 (02036) VOLTMETER M101 0-300 VDC..... 041 (45092)	EA	1				*	*	*		2	M101	
PAWZ	8145-164-6952	WIRE, ELECTRICAL W105 RED, NO. 18 AWG... STRANDED WS17U (01349)	FT	6				*	*	*		2	W105	
PAWZ	6145-160-5027	WIRE, ELECTRICAL W106 BLACK, NO. 18 AWG... STRANDED WS14U (01349)	FT	6				*	*	*		2	W106	

SECTION IX

TM11-6625-370-14P

INDEX - FEDERAL STOCK NUMBER AND REFERENCE NUMBER
CROSS-REFERENCE TO FIGURE AND ITEM NUMBER

FIGURE NO.	ITEM NO.	STOCK NUMBER	FIGURE NO.	ITEM NO.
5307-638-2056	E110	5920-280-4960		F101
5307-638-2056	E111			
5307-638-2056	E112			
5307-807-0507	E113			
5310-266-0746	A101	5920-655-1500		S103
		5935-663-5709		
5905-171-2005	R107			
5905-171-2005	R108			
5905-185-4946	R112	5935-636-7145		P102
5905-185-4955	R116			
5905-254-7700	R113			
5905-298-2020	R117	5960-188-0883		W104
5905-299-4021	R114	5960-223-5970		W106
		5960-273-2434		W108
5905-617-2400	R101	5960-273-2434		W102
5905-644-3040	R106	5960-273-2434		W103
		5960-642-8341		W105
5910-112-7399	C105			
5910-112-7409	C193	5975-206-6676		
5910-112-7409	C104	6145-160-5027		W105
5910-668-0254	C106	6145-164-6952		W105
5910-668-0254	C197	6145-284-0579		W104
5910-811-6091	C101	6625-643-0600		W101

REFERENCE NO.	MFR CODE	FIG. NO.	ITEM NO.	REFERENCE NO.	MFR CODE	FIG. NO.	ITEM NO.
AN3057-6	88044			RC426F513J	81349		R113
AN3102A1457P	88044		P101	RC426F753J	81349		R116
AN31068145	88044		J101	SJ0	88193		W104
CM208241J	81349		C102	ST23M	81350		S103
CP5381FF504K	81349		C103	TJU6020	14655		C101
CP5381FF504K	81349		C104	FS101P01	81349		
CP5381FF205K	81349		C105	FS102W03	81350		E102
DF308C	58474		E104	T1067	02036		T101
DF308C	58474		E107	UP121M	81349		P102
DF308C	58474		E105	WS16U	81349		W106
DF308C	58474		E106	WS17U	81349		W105
D13860-917	56289		C106	10000-219-25F	14861		R101
D13860-917	56289		C107	118612	59433		E101
F02A250V2A	81349		F101	1300	70485		A101
JU1041P3056	01121		R118	147-916	02660		
MS35059-9	96906		S101	173-0-101	06053		O101
MS35059-9	96906		S102	2	97983		W101
PC	81349		O102	2	97983		W102
RC206F333K	81349		R111	2	97983		W103
RC206F470K	8134		R104	32	97983		E110
RC206F470K	81349		R105	32	97983		E111
RC206F471K	81349		R107	32	97983		E112
RC206F471K	81349		R108	342001	75915		
RC206F474K	81349		R112	342003A2	75915		
RC326F105K	81349		R102	4MAT	97983		W104
RC326F105K	81349		R103	42	97983		E113
RC326F203J	81349		R114	47	76545		
RC326F225K	81349		R106	5U4G8	81349		V101
RC326F273J	81349		R117	6SL7NGT	81349		V104
RC326F682K	81349		R115	6Y0G	81349		V102
RC426F270J	81349		R109	6Y0G	81349		V103
RC426F270J	81349		R110	861	65092		W101

By Order of the Secretary of the Army:

FRED C. WEYAND
General, United States Army
Chief of Staff

Official:

VERNE L. BOWERS
Major General, United States Army
The Adjutant General

Distribution:

Active Army:

USASA (2)
CNGB (1)
Dir of Trans (1)
COE (1)
TSG (1)
USAARENBD (1)
USAMB (5)
AMC (1)
TRADOC (2)
ARADCOM (2)
ARADCOM Rgn (2)
OS Maj Comd (4)
LOGCOMDS (2)
MCOM (2)
TECOM (2)
USATC Inf (2)
USACRREL (2)
USACC (4)
MDW (1)
Armies (2)
Corps (2)
HISA (Ft Monmouth) (14)
Svc Colleges (1)
USASES: (5)
USAADS (2)
USAFAS (2)
USAARMS (2)
USAIS (2)
USAES (2)

USAINTCS (2)
WRAMC (1)
ATS (1)
Ft Gordon (14)
Ft Huachuca (14)
WSMR (1)
Ft Carson (5)
Ft Richardson (ECOM Ofc) (2)
Army Dep (1) exempt
LEAD (14)
SAAD (20)
TOAD (14)
ATAD (14)
USA Dep (2)
Sig Sec USA Dep (2)
Sig Dep (2)
Sig FLDS (1)
USAERDAA (1)
USAERDAW (1)
MAAG (1)
USARMIS (1)
Unit org under fol TOE
(1 copy each unit):
11-16
11-97
11-98
11-117
11-500(AA-AC)

NG: None.

USAR: None.

For explanation of abbreviations used, see AR 310-50.

U.S. GOVERNMENT PRINTING OFFICE: 1974-015126/302

END

01-03-83

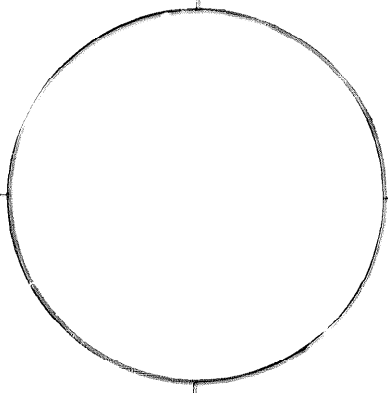
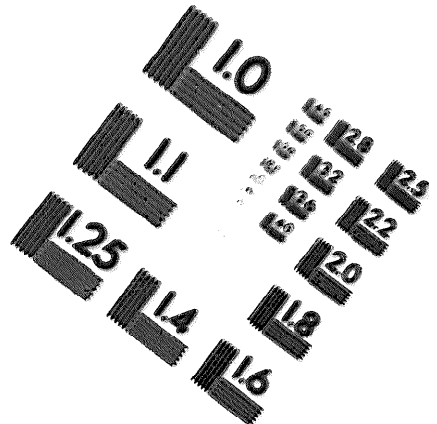
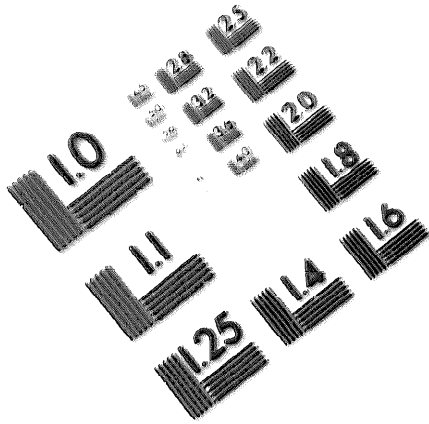
DATE





DEPARTMENT OF THE ARMY

MICROFORM
TEST TARGET



150 MM

1.0 mm (e= 0.81 mm)

ABCDEFGHIJKLMNQRSTUWVXYZ1234567890
abcdefghijklmnopqrstuvwxyz\$%&'/*~:;<=>@*

1.5 mm (e= 1.09 mm)

ABCDEFGHIJKLMNQRSTUWVXYZ1234567890
abcdefghijklmnopqrstuvwxyz\$%&'/*~:;<=>@*

2.0 mm (e= 1.37 mm)

ABCDEFGHIJKLMNQRSTUWVXYZ
abcdefghijklmnopqrstuvwxyz
1234567890\$cE/%#1/21/41/8—=+x&@*

2.5 mm (e= 1.77 mm)

ABCDEFGHIJKLMNQRSTUWVXYZ
abcdefghijklmnopqrstuvwxyz
1234567890\$cE/%#1/21/41/8—=+x&@*

1.0 mm (e= 0.81 mm)

ABCDEFGHIJKLMNQRSTUWVXYZ1234567890
abcdefghijklmnopqrstuvwxyz\$%&'/*~:;<=>@*

1.5 mm (e= 1.09 mm)

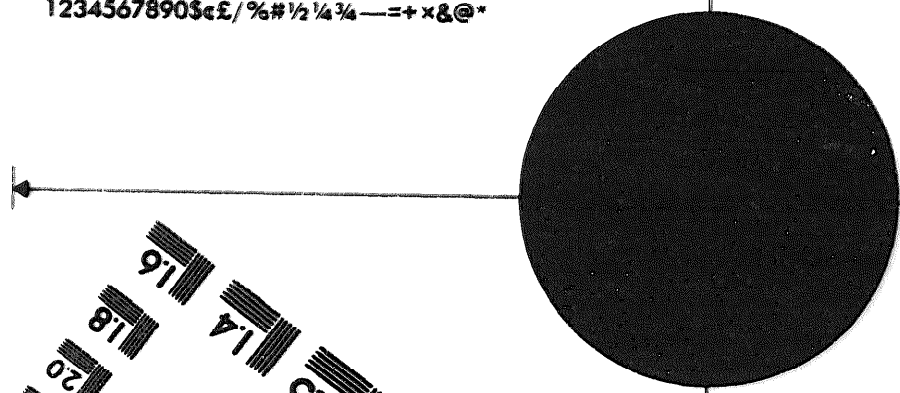
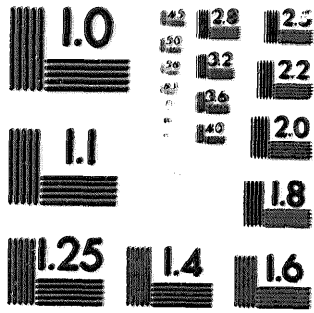
ABCDEFGHIJKLMNQRSTUWVXYZ1234567890
abcdefghijklmnopqrstuvwxyz\$%&'/*~:;<=>@*

2.0 mm (e= 1.37 mm)

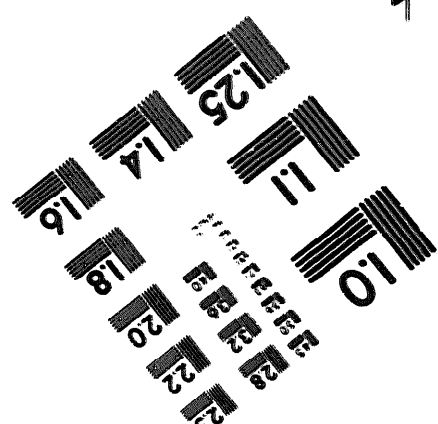
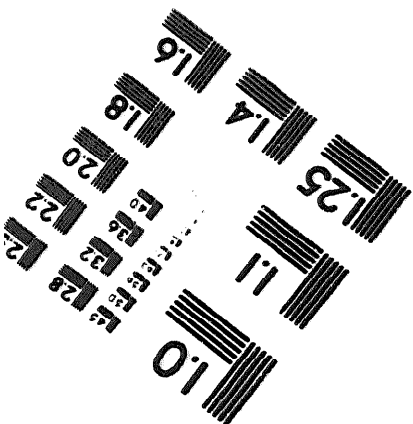
ABCDEFGHIJKLMNQRSTUWVXYZ
jbcdefghijklmnopqrstuvwxyz
1234567890\$cE/%#1/21/41/8—=+x&@*

2.5 mm (e= 1.77 mm)

ABCDEFGHIJKLMNQRSTUWVXYZ
abcdefghijklmnopqrstuvwxyz
1234567890\$cE/%#1/21/41/8—=+x&@*



200 MM



250 MM